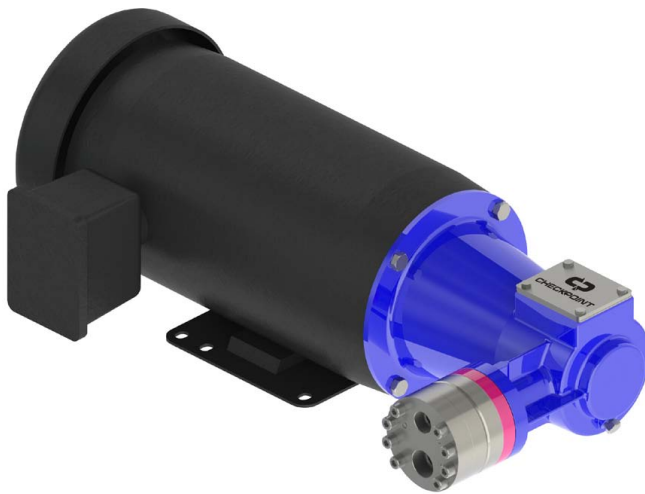




Proudly Distributed By

**TRIDENT** AUSTRALIA  
FLUID SYSTEMS & COMPONENTS

## Series MDZ Electric Pump



### PUMP CATEGORY

Type: Non-metallic Monodiaphragm  
Control: Motor Speed

### FLOW RATE

0.05 - 60 USG/H (0.19 - 227.13 L/H)

### PRESSURE

0 - 1,500 PSIG (0 - 103 BARG)

### SUPERIOR DESIGN

- Durable, High-Quality Materials
- Accurate and Repeatable Injection
- Quick Maintenance and Low Downtime
- High Return on Investment
- Runs Dry Without Damage
- Particulate Tolerant
- Zero Leakage

### CHEMICAL RESISTANCE

Proprietary, high-quality seal materials enable CheckPoint pumps to provide unparalleled chemical resistance. Wetted components are available in an array of materials. Chemical applications include, but are not limited to:

- Scavengers (H<sub>2</sub>S, O<sub>2</sub>, CO<sub>2</sub>)
- Hydrate Inhibitors (MeOH, MEG, LDHI)
- Foamers and Defoamers
- Corrosion, Scale, and Paraffin Inhibitors
- Clarifiers, Biocides, Bleaches, and Acids

### WARRANTY

CheckPoint guarantees 12 months of material and workmanship.

MDZ MODEL	GEARBOX RATIO	FLOW RATE (MINIMUM)	FLOW RATE (MAXIMUM)	FLOW RATE (MAXIMUM)	PUMP ONLY DIMENSIONS L X W X H IN (MM)	PUMP ONLY WEIGHT LB (KG)	SUCTION CONNECTION	DISCHARGE CONNECTION
		USG/H (L/H) 250 RPM	USG/H (L/H) 1,750 RPM (60Hz)	USG/H (L/H) 1,450 RPM (50Hz)				
MDZ-001	N/A	8.57 (32.44)	60 (227.13)	49.71 (188.17)	7.09 (180) X 10.02 (255) X 6.5 (165)	12 (5.4)	1/2" FNPT	3/8" FNPT
MDZ-005	5:1	1.72 (6.51)	12.04 (45.58)	9.98 (37.78)	9.07 (230) X 11.57 (294) X 5.9 (150)	18.5 (8.4)	1/2" FNPT	3/8" FNPT
MDZ-010	10:1	0.84 (3.18)	5.87 (22.22)	4.86 (18.40)	9.07 (230) X 11.57 (294) X 5.9 (150)	18.5 (8.4)	1/2" FNPT	3/8" FNPT
MDZ-025	25:1	0.31 (1.17)	2.17 (8.21)	1.80 (6.81)	9.07 (230) X 11.57 (294) X 5.9 (150)	18.5 (8.4)	1/2" FNPT	3/8" FNPT
MDZ-050	50:1	0.13 (0.49)	0.94 (3.56)	0.78 (2.95)	9.07 (230) X 11.57 (294) X 5.9 (150)	18.5 (8.4)	1/2" FNPT	3/8" FNPT
MDZ-100	100:1	0.05 (0.19)	0.32 (1.21)	0.27 (1.02)	9.07 (230) X 11.57 (294) X 5.9 (150)	18.5 (8.4)	1/2" FNPT	3/8" FNPT

Reduction ratios other than shown here are available upon request.

MDZ-001 model does not use a reduction gear drive.

Flow Rate values shown are at 1,000 PSIG (69.0 BARG) discharge with elastomeric diaphragms. Consult factory for PTFE diaphragms.

Tabular data should be used for quick reference only. See performance curves for accurate pump selection.

A minimum of 50 PSIG (3.45 BARG) back pressure is required to maintain flow accuracy.

Maximum Head Discharge Pressure: 1,500 PSIG (103 BARG) Metallic; 350 PSIG (24 BARG) PVDF; 250 PSIG (17 BARG) Polypropylene.

Maximum Inlet Pressure: 250 PSIG (All Head Materials).

Max Suspended Solids Size: 200 microns.

Weight & dimensions exclude motor. Weights shown are for metallic head.



**CHECKPOINT**  
PUMPS & SYSTEMS

www.cppumps.com • sales@cppumps.com

Proudly Distributed By

**TRIDENT** AUSTRALIA  
FLUID SYSTEMS & COMPONENTS

## Series MDZ Electric Pump



CheckPoint's **Series MDZ** pump delivers up to 60 USG/H (227 L/H) and can reliably inject into pressures up to 1,500 PSIG (103 BARG). The Series MDZ features a unique drive system which efficiently converts the rotational energy of the motor to axial energy and pressurizes hydraulic oil, actuating a single nonmetallic diaphragm. The process pressure is constantly balanced by hydraulic pressure on its opposing side so the flexible diaphragm essentially experiences zero differential pressure – enabling incredibly low diaphragm failure rates. The Series MDZ has low-mass poppet check valves, and none of its sliding parts ever come into contact with the chemical. These features allow particles to pass through the pump without causing damage, guaranteeing long-term reliability and superior uptime. The flow rate is controlled by varying the speed of the motor with a variable-frequency drive (VFD). Any changes can be easily implemented while the unit is running, either locally at the device or remotely using a 4-20mA signal. The Series MDZ can accommodate a variety of motors, ensuring compliance to any stringent electrical requirements. The construction of this pump ensures high stability, low downtime, and the immense dependability that CheckPoint consistently guarantees.

Our pumps maintain unparalleled chemical resistance due to the essential integration of high-quality, proprietary seal materials. In order to meet a wide variety of chemical compatibility needs, wetted parts are available in an array of materials, such as 316 SS, Hastelloy C-276, brass, PVDF, and polypropylene, and seals are available in EPDM, FKM, PTFE, Neoprene, and Buna-N.

We recommend "Plug & Play" injection packages (as pictured below) as an optimum solution to efficiently and effectively integrate chemical injection into your process. CheckPoint has engineered, manufactured, and sourced high-quality components which, combined in a package with our pumps, maximize product life and optimize productivity. We also offer custom system design and technical services to meet specialty product requirements. CheckPoint will create a solution that meets your specific chemical injection needs, from concept to completion.



[www.cppumps.com](http://www.cppumps.com) • [sales@cppumps.com](mailto:sales@cppumps.com)